

WHAT'S COMING UP

February 1st

National Freedom Day

February 2nd

Groundhog Day

February 7th

Rose Day

February 9th

National Pizza Day

February 11th

Super Bowl Sunday

February 13th

Mardi Gras

February 14th

Valentine's Day

February 17th

National Random Acts of Kindness Day

February 20th

National Comfy Day

February 22nd

National Margarita Day

February 28th

National Pancake Day

February 29th

Leap Day

FEBRUARY 2024 NEWSLETTER



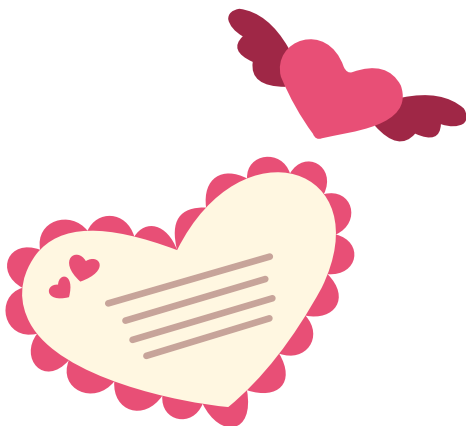
Hello Residents,

Can you believe it's February already? We're all looking forward to Valentine's Day and making it a special day for all our residents. As your new Director, I'm honored and thrilled to not only be the leader of the community but to have each of you as my residents. I'm excited to work alongside the greatest team ever. We're going to have a lot of fun and have plenty of enjoyable activities. We always welcome your suggestions to make your community a better, happier, fun-filled place to call home.

*Larry Goings,
Executive Director*

Friends Make the Best Neighbors

Would you like a free* month at Regency? Don't forget about our "Friends Make the Best Neighbors" promotion! Invite your friends to move into our community and receive a free month or a check for \$2,500 for each referral who becomes a resident. *Referring residents will be paid out 60 days from the move-in date.





Celebrating the King of Rock 'n Roll's Birthday

We enjoyed celebrating Elvis Presley's birthday!



Gospel Singing

We joined in some Gospel Singing with Virgil and David.



Sand Art/Card Holder

Our residents enjoyed making sand art decorations and card holders.

FUN FACTS

- » February fluctuates between 28 and 29 days per year. The 29th day occurs every 4 years, during leap years.
- » February was officially added to the Roman calendar in 713 B.C.
- » The length of February was finalized when Julius Caesar remade the Roman calendar and assigned the month 28 days and 29 days.
- » If you were born in February, your birthstone is an amethyst, and your flower is a primrose.
- » Over time, the length of February kept changing. At one point, it had as little as 23 days.
- » In the Northern Hemisphere, February is the third month of winter. Meanwhile, in the Southern Hemisphere, February is the last month of summer. Between the North and South Hemispheres, February is the equivalent of August.
- » The name of February comes from the Latin word “Februum,” which means purification.
- » February was named after a purification ritual which was like an early Roman spring cleaning festival.
- » In Welsh, February is sometimes known as “y mis bach,” which means “little month.”
- » January and February were the last months added to the Roman numeral calendar.
- » The Saxons called February “Sol-monath” which means “cake month,” because they would offer cakes to the gods during February.
- » Of all the words you can misspell, February is one of the most misspelled words in the English language. Even the White House has misprinted the word “February” before in a press release!



Valentine's Day Party
February 14th at 3:30 p.m.

We are hosting our Valentine's Party with special guests Kris & Mark Allen! This husband and wife team will be performing their variety duet.



Curt Mathson
February 21st at 2:00 p.m.

Join us for entertainer Curt Mathson's performance!
You won't want to miss this!



Mardi Gras Themed Lunch
February 21st at 11:30 a.m.

Join us as we serve up all your Mardi Gras favorites at
this themed lunch! Laissez les bons temps rouler!



JANUARY EMPLOYEE
OF THE MONTH

Ashley Antrican



Ashley has been employed with Regency since June 2013. She is the charge nurse on the first floor. Ashley is a great asset here at Regency. She is very dependable and always willing to help out wherever she is needed. She is a dedicated nurse and her residents love her and she loves them. Ashley, thank you for all you do to make Regency a better place!



Happy birthday

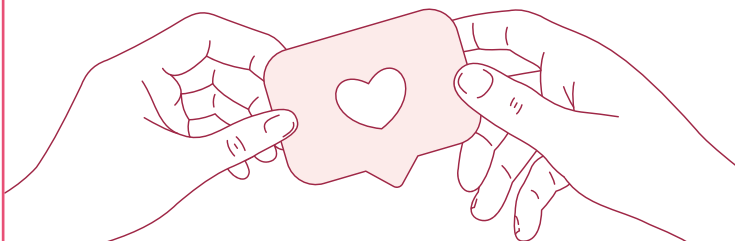
Resident

Mary Johnston	Feb. 7
David Weldon	Feb. 9
Pete Robertson	Feb. 12
Adeline Arnott	Feb. 13
Marcus Miller	Feb. 25
Diane Johnson	Feb. 26

Stay Connected!

Join Our Facebook Group

Are you on Facebook? Join our exclusive Friends and Family Group for a fun glimpse into what's happening in our community.



SUDOKU

PUZZLE 1

	3		6	9				5
		8						
7						3	4	
		1	7					
		9		3		4	2	
2				1				
8	2					9		
		5					3	
	4		8			5	7	2

PUZZLE 2

	8	5						7
			8					
1	2			3	4			
6			5					
		7						3
					3	4	1	2
							7	
	4			6				9
2			3	1			5	

WORD FIND

L L I X P Z S B L W N K W M R X H W W K L Q D R G
 U Q P I U A M E T H Y S T L D X S A Q R O P E H G
 P H Y J K C Q T R P M C F A A Z J S A O V G V V W
 E S V E U G R D Z V R Q J Q B T F H F M E B B M E
 R D F C S H U T T L E I C U T U I I E A N E U O L
 C X C E K A W K K J U U M A E V F N B N A A O N S
 A C O L U M B I A C D J B R S B A G R Q D T A A H
 L M Q D M U G S W P K Z Y I O C A T U R A L B T P
 I K W M L M L S W F E Q H U E S I O U W W E C H Q
 A G V F R B B M S T S O L S O S E N M H B S G U E

FEBRUUM
 ROMAN
 LOVE

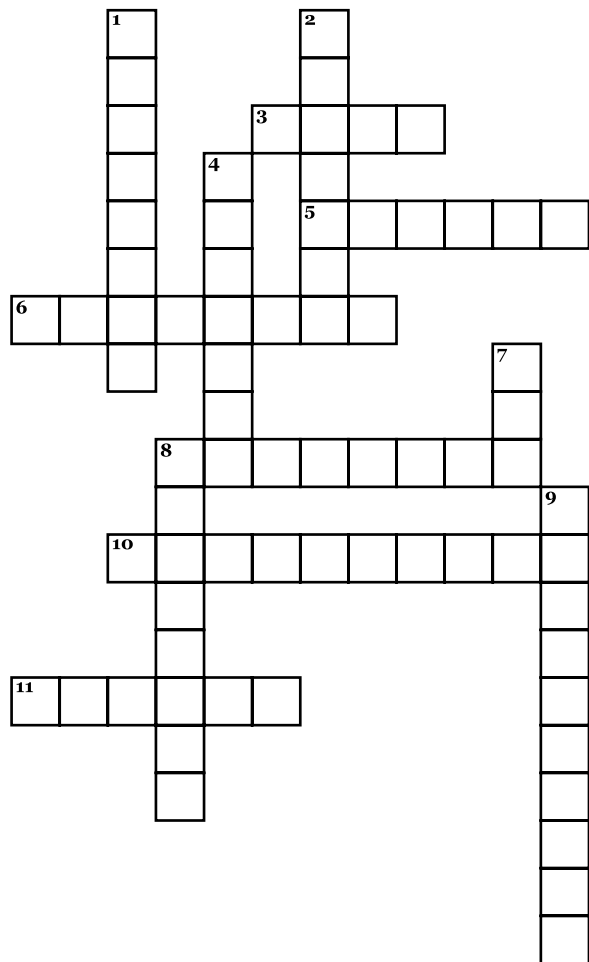
LUPERCALIA
 COLUMBIA
 BEATLES

PRIMROSE
 WASHINGTON
 SOL

MONATH
 AQUARIUS
 AMETHYST

LATIN
 WELSH
 SHUTTLE

CROSSWORD



Down

1. Space Shuttle _____
2. Famous British band, The _____
4. February in Latin
7. Mardi Gras is also known as _____ Tuesday
8. One of February's zodiac signs
9. American president George _____

Across

3. "Sol-monath" means "_____ month"
5. In Welsh February is known as "y mis bach," which means "_____ month."
6. February's birth flower
8. February's birthstone
10. Roman festival of love
11. Roman Emperor _____ Caesar

Regency Senior Living's mission is to



- S**erve our residents and families while
- E**ngaging in relationships
- R**especting individuality and
- V**aluing the contributions of those who
- E**volve our care every day

EMPLOYEE OF THE YEAR

Kris Stryjewski



Kris, our employee of the month for December, has been named Employee of the Year! She has been married to her best friend for 30 years. She has 9 children and 28 grandchildren.

She loves to travel and in her spare time her creative side crafts away! She is a member of the Freedom Fellowship Greenville and is part of the music ministry. Always try to remember God must become greater, and we must become less. Smile, it's good for you!

EMPLOYEE OF THE MONTH

Gianna Cufone



Gianna Cufone is fairly new to our Regency family but she has jumped in and won the hearts of our Memory Care residents. She can be shy at times but she will go the extra mile for those in her care. Gianna, thank you for everything you do to help make Regency a better place for our residents!

ANSWER KEY

A 15x15 word search grid with several words circled in red. The circled words are: AMETHYST, SHUTTLE, COLOMBIA, JULIUS, and SOLE.

A crossword puzzle grid with the following words filled in: COLUMBIA, AMETHYST, JULIUS, SHUTTLE, and SOLE. The grid is numbered 1 through 15.

CONNECT WITH US

- Facebook.com/RegencyRetirementVillage
- RegencyMorristown.com

Puzzle 1

4	3	2	6	9	7	1	8	5
5	9	8	3	4	1	2	6	7
7	1	6	2	8	5	3	4	9
3	5	1	7	2	4	6	9	8
6	7	9	5	3	8	4	2	1
2	8	4	9	1	6	7	5	3
8	2	7	4	5	3	9	1	6
9	6	5	1	7	2	8	3	4
1	4	3	8	6	9	5	7	2

Puzzle 2

9	8	5	1	2	6	3	4	7
3	7	4	8	5	9	1	2	6
1	2	6	7	3	4	9	8	5
6	3	2	5	4	1	7	9	8
4	1	7	9	8	2	5	6	3
8	5	9	6	7	3	4	1	2
5	6	3	4	9	8	2	7	1
7	4	1	2	6	5	8	3	9
2	9	8	3	1	7	6	5	4